

DATA SHEET

Product line



Automatic Hydraulic



M50 Classification

Additional functions with corresponding equipment



Uninterruptible power supply



Acoustic warning signal



Heating element



EFO emergency function



LED lighting strip

Road Blocker 1000

The automatic road blocker 1000 is suitable especially for securing passages up to 6 m wide and is designed for very frequent use. (approx 2000 cycles / day).

- Flush-fitting in the floor
- External hydraulic operator (max. distance 30 m)
- Optionally with EFO emergency function (Emergency Fast Operation)

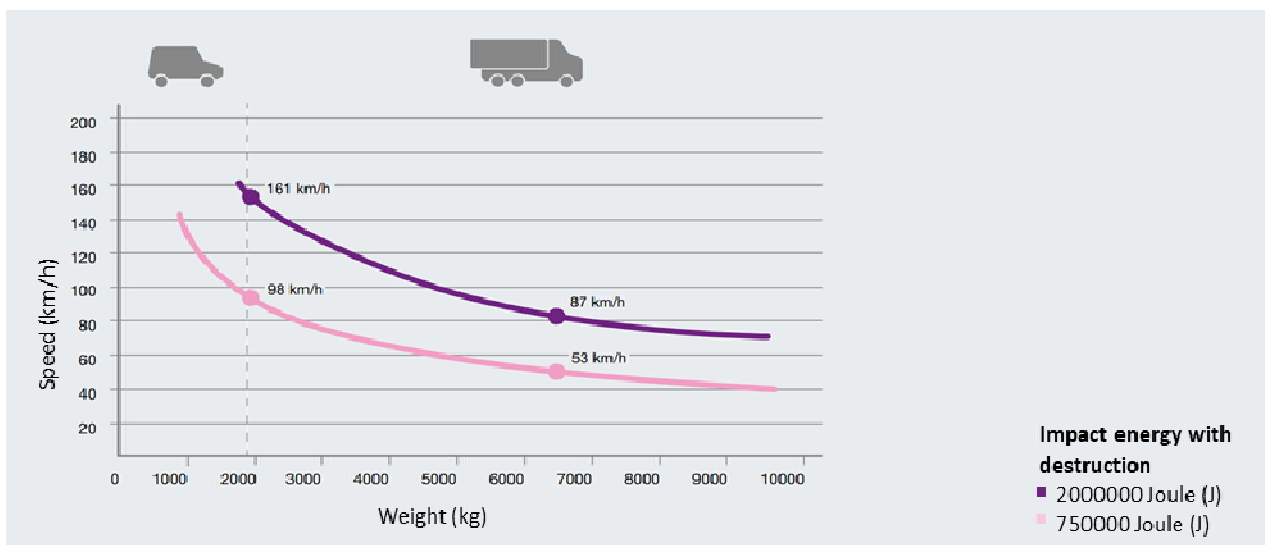


Technical data

Version	Automatic
Movement	Hydraulic
Ramp height above ground level	1000 mm
Platform length	Standard: 2 m - 2.5 m - 3 m - 3.5 m - 4 m - 5 m - 6 m
Fitting depth	300 mm
Speed, lifting	14.2 cm/s
Speed, lowering	14.2 cm/s
Load class according to EN 124	D400 (40 tonnes)
Protection category	IP67
Cycles (approx. per day)	2.000
Overall cycles (max. service life)	3.000.000
Impact energy with destruction	2000000 J
Certified according to	PAS68
Conforming with	M50, K12, IWA14-1
Temperature range	-40°C to +70°C

Equipment		Function
Metal cladding for front and sides	Improved safety for pedestrian, vehicles and protection of the components	●
Ramp surface treatment, steel version	Anti-corrosion treatment – standard painting (Anthracite grey)	●
Metal plate surface finish	Steel (corrugated sheet)	●
Manual emergency lowering	Yes	●
Reflecting strips	Improved visibility at night, all-round	●
Manual handling device	Manual lifting for the road blocker in case of power failure	○
Lighting	Lighting strips with 30 LEDs/ m	○
Heating element	For smooth operation during the colder seasons	○
Uninterruptible power supply UPS	To bypass power failures up to 10 cycles	○
EFO emergency function	EFO emergency function to quickly raise the road blocker in approx. 2 s	○
Acoustic warning signal	Warning signal when lifting and lowering	○
Hydraulic pump	Hydraulic pump with biodegradable oil	○

● Standard ○ Optional



The information above, in particular the specifications and illustrations, are not binding and do not constitute an agreement on quality or a guarantee. Changes and errors are expressly reserved. The data sheet is subject to copyright. No part may be reproduced without our prior permission.

12 EC / EU Declaration of Conformity

(as defined in EC Machinery Directive 2006/42/EC, Annex II, Part 1 A)

Manufacturer Hörmann KG Verkaufsgesellschaft,
Upheider Weg 94 – 98
33803 Steinhagen, Germany

Management Axel Becker

The manufacturer above herewith declares under its sole responsibility that the product

Type Road blocker **High Security Line**
Template **Road blocker 1000**
Intended use As a protection barrier and / or for traffic control

conforms to the essential requirements and other relevant provisions of the EC / EU directives listed below with intended use:

2006/42/EC (MRL) Machinery Directive 2006/42/EC
2014/30/EU (EMC) Electromagnetic compatibility
2015/863/EU (RoHS) Restriction of the use of certain hazardous substances in electrical and electronic equipment

Applied and consulted harmonised standards:

EN ISO 12100:2010 Safety of machinery – General principles for design – Risk assessment and risk reduction

EN 60598-1:2015 Luminaires – Part 1: General requirements and tests

EN 60204-1:2006 + A1:2011 Safety of machinery – Electrical equipment of machines – Part 1: General requirements

EN 61000-6-2:2005 Electromagnetic compatibility (EMV) – Part 6-2: Generic standards – Immunity for industrial environments

EN 61000-6-3:2007 + A1:2011 + AC:2012 Electromagnetic compatibility (EMC) – Part 6-3: Generic standards – Emission standard for residential, commercial and light-industrial environments

EN IEC 63000:2018 Technical documentation for the assessment of electrical and electronic products with respect to the restriction of hazardous substances

Any unauthorised modification made to this product shall render this declaration null and void.

The signatory is the person authorised to compile the required technical documentation.

Steinhagen, 01.07.2021



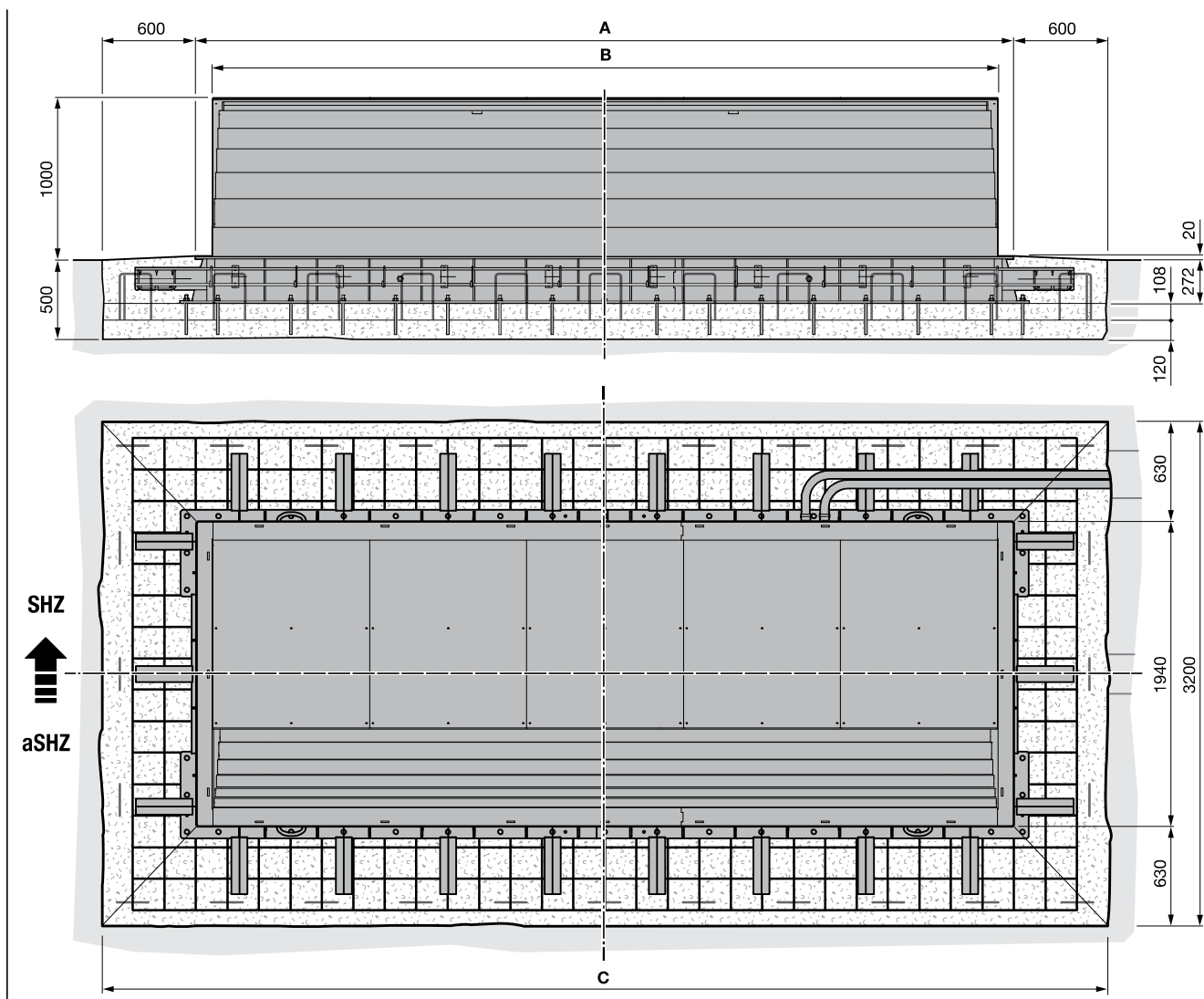
Axel Becker
Management

13 Technical data

13.1 Road blockers

Road blocker material	Steel (S235JR)
Height of movable ramp above the ground	1000 mm
Width of the movable ramp (passage opening)	2000 mm, 3000 mm, 4000 mm, 5000 mm
Depth of the road blocker	300 mm
Road blocker surface treatment	Protection against corrosion Painted (standard colour Anthracite grey)
Surface treatment of the movable ramp	Cover plate made of steel (S235JR) with anti-slip coating (optional: cover plate made of stainless steel AISI 304)
Reflecting strips	Standard – height 55 mm
Raising time	14.2 cm/s (raising time EFO 2 s)
Lowering time	14.2 cm/s
Connecting cable to the control	Standard 10 m (max. length 30 m)
Hydraulic operator	Integrated in the control
Control power consumption	230 V +/- 10%, 6 A (max. 11 A)

Hydraulic operator overheat protection	As standard Switch-off threshold 120°C Automatic switch-on 80°C
Protection category	IP 67
Type of use	Intensive – 2000 cycles / day
Average life cycle	3000000 cycles
Impact energy (without destruction)	750000 J (with exception of the protective sections)
Safety photocell for preventing accidents	2000000 J (with exception of the protective sections)
Load class	UNI standards D400
Permissible ambient temperature	–40°C to +70°C Use of heating elements at temperatures under –10°C At temperatures over +40°C, use the air conditioning unit in the control
Control cooling	Optional: Recommended in places outdoors (direct sunlight) with installed control and temperatures over 40°C as well as with over 100 cycles / hour.
Anti-corrosion treatment (recommended for saline ambient conditions) Stainless steel cover plate	Optionally available: – For installations < 2 km from the sea – For installations at places using road salt to prevent ice formation
Relative humidity function range	10% – 80%
Reference height for performance values	≤ 1500 m above sea level
Max. airborne sound emission in operation	60 dB
Weight with control	1530 kg (2000 mm), 2120 kg (3000 mm), 2670 kg (4000 mm), 3100 kg (5000 mm)



Model	A	B	C
2.0 m	2190 mm	1990 mm	2400 mm
3.0 m	3190 mm	2990 mm	3400 mm
4.0 m	4190 mm	3990 mm	4400 mm
5.0 m	5190 mm	4990 mm	5400 mm

13.2 Control

Circuit board	With microprocessor with specific control program
Standard housing	For wall fitting, as an alternative to floor fitting when equipped with a bottom plate for the manual handling device
Protection category	IP 66
Supply	230 V +/- 10%, 50/60 Hz
Fuse protection	Residual current circuit breaker 1P + N – 16 A – 6 KA
Power supply unit	27 V DC – 11.6 A
Maximum number of road blockers that can be connected	1
Permissible ambient temperature	-15°C up to +60°C In case of extreme temperatures, we recommend using the heating element or air conditioning unit for the control.
Relative humidity function range	10% to 80%
Reference height for performance values	≤ 1500 m above sea level

Road blocker 1000

HÖRMANN KG Verkaufsgesellschaft
Upheider Weg 94 – 98
33803 Steinhagen
Germany

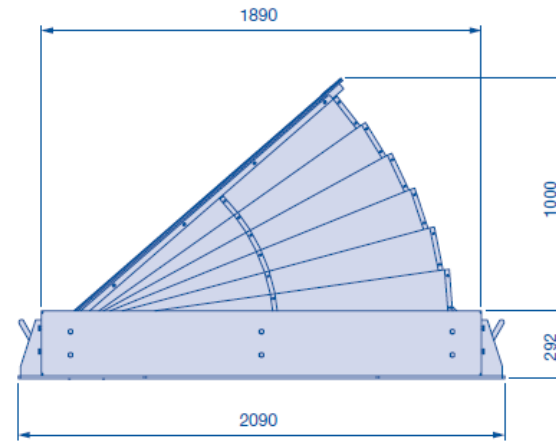
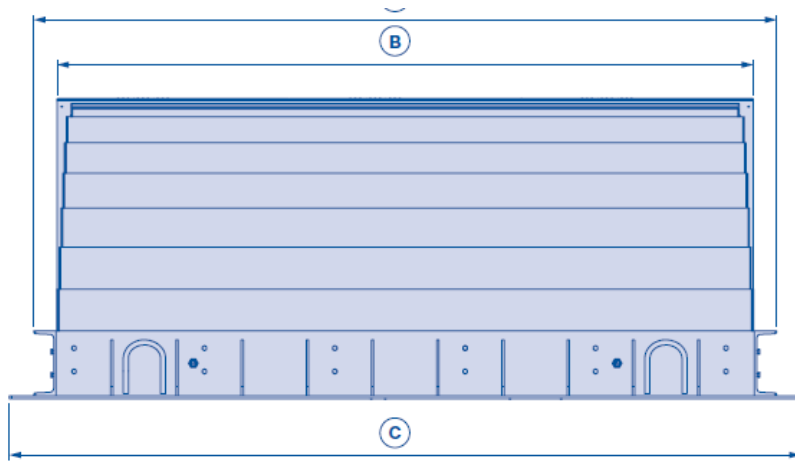
Road Blocker 1000

- For high frequency of use, 2000 movements / day
- Barrier height 1000 mm
- Shallow foundation (500 mm including drainage)
- Available width: 2, 3, 4, 5, 6 m
- Lifting lowering speed: 4-5 sec
- Inserted flush-fitting in the ground
- External hydraulic operator in the control unit (max. possible distance 30 m)
- EFO accumulator for emergency lifting in 1,5 sec. (optional)
- Device for manual operation up/down in case of power failure (optional)
- RB 1000 – K12(M50) crash-tested



**Control unit with
hydraulic operator,
EFO accumulator
(optional) and manual
emergency operation
device (optional)**

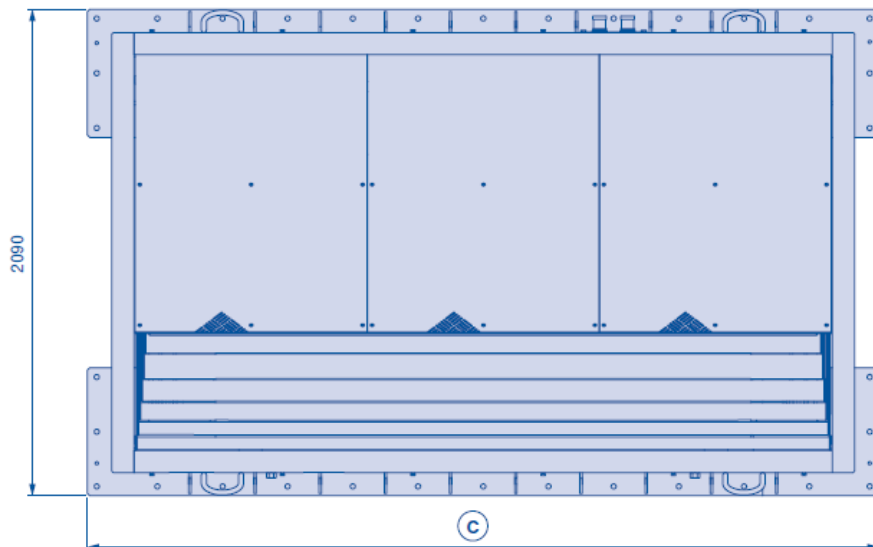




Road Blocker 1000

CERTIFIED PAS68:2013 – CRASH WITH A 7.500Kg TRUCK AT 80Km/h
IN COMPLIANCE IWA 14-1:2013 – CRASH WITH A 7.200Kg TRUCK AT 80Km/h
IN COMPLIANCE ASTM M50/DOS K12 – CRASH WITH A 6.800Kg TRUCK AT 80Km/h

MODELL	A	B	C
Road Blocker 1000 – 2000	2190	1990	2400
Road Blocker 1000 – 3000	3190	2990	3400
Road Blocker 1000 – 4000	4190	3990	4400
Road Blocker 1000 – 5000	5190	4990	5400
Road Blocker 1000 – 6000	6190	5990	6400



Hörmann Perimeter Protection Systems

High Security Line – Road Blocker

HÖRMANN

